

# RAVENHALL

Preceding model R5000WS



**HANDY WOOD STORAGE**

The Ravenhall will heat small to medium sized areas.

- Efficiently heats small to medium sized areas
- Large 8mm radiant cook top
- Optional 2-speed fan for convection heating
- 6mm steel firebox for durability
- Lined with masonry fire bricks and a steel baffle for efficient burning
- Handy storage space for wood
- Built-in ash drawer to collect ash and make disposal easier

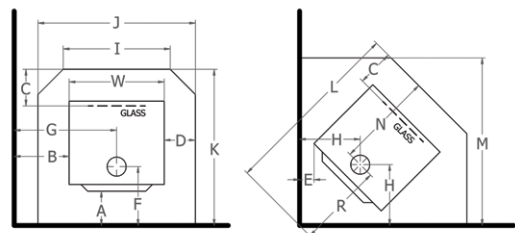
MODEL	983921
FINISH	VHT Black
FIREBOX	Steel
EST. PEAK OUTPUT	19kW
APPROX. HEAT AREA	190m <sup>2</sup>
EMISSIONS	1.3g/kg
EFFICIENCY	60%
DIMENSIONS (WxDxH)	700 x 576 x 804mm
FIREBOX DIMENSIONS (WxDxH)	450 x 389 x 323mm
LOG SIZE	400mm



**INTEGRATED ASH DRAWER**

Minimum distance to heat sensitive materials (mm) when a flue deflector is fitted, and floor protector sizes as per standard AS/NZS 2918:2001.

FLUE SHIELD	A	B	C	D	E	F	G	H
FUF	188	280	300	100	150	384	630	506
	I	J	K	L	M	N	R	W
	600	900	1028	1360	1174	644	716	700



FUF: Flomet Universal Flue system with full length decorative heat shield.

